

2008

# Part Batch Processor

## Why you need this:

- You need to update the current pricing for multiple inventory parts
- You need to update descriptions for large number of inventory items
- You need to reassign product lines
- You need a fast and easy way to change almost any field of your inventory records

**PROGRAM REQUIREMENTS:**  
**EXCEL 2003 or NEWER**



**Ken Phillips**

**Phone: (916) 787-1571**

or

**1 (877) 439-0975**

**Fax: (916) 244-0158**

**531 Oak Street, Suite #5**

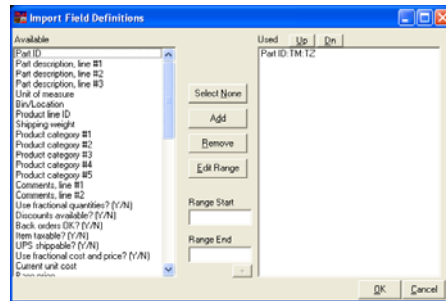
**Roseville, CA 95678**

[sales@bsoftintegrators.com](mailto:sales@bsoftintegrators.com)  
[www.BSoftIntegrators.com](http://www.BSoftIntegrators.com)

## Effortless Changes to Fields of Inventory Records in Sage BusinessWorks

BSoft's Part Batch Processor, gives you the capability to make changes to BusinessWorks inventory record fields. As easy as 1,2,3!

**It's time to increase prices to account for rising costs,** don't manually change each inventory record, do them all at once! Simply open Part Batch Processor; define the part range that you wish to make



changes to, than define the appropriate fields required for your desired changes. The chosen parts and fields are exported to a spreadsheet where you can make changes.

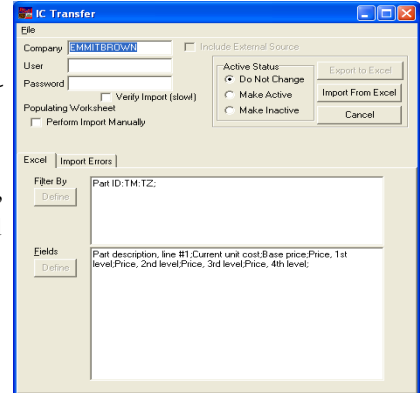
Because the information is exported into a spreadsheet you can easily calculate changes in price and then paste the new prices into the appropriate cells, then import the changed fields back into BusinessWorks.

## Changing descriptions

is just an export away. Select the desired part range and record fields, export them, change them, and import them back into BusinessWorks. It is as easy as it sounds!

Change

almost any field from part descriptions to status (active or inactive). Whatever the change you need, accomplish



it with ease for multiple records with one single tool, Bsoft's Part Batch Processor, your inventory record change manager! You don't have to worry about field formatting or sequence. The Part Batch Processor handles it all automatically!

Part description, line #	Current unit cost	Base price	Price, 1st level	Price, 2nd level	Price, 3rd level	Price, 4th level
1 The original Customizer Time	3943.9679	81510	101897.5	65336		70913.7
2 Time Machine built from	65202.5428	103020	241312.5	154440		187953.5
4 Time Machine Built out of a	39546.6138	97240	121960	77792		84598.8
5 Time Machine built on the	52346.5428	184460	206624.5	131680		142071.5
5 Time machine built from	37546.5428	142000	170720	114400		124410
7 Speedload Time Machine	0	208000	321240	208000		224850
8 Time machine built on	238546.5428	607750	756607.5	490300		520742.5
9 Time Machine built around	108546.5427	278800	348924.5	223000		242599.5
10 Tubular Chassis Steel	0.45	0	0.9	0.9		0.9

### CHALLENGE

Efficiently manage inventory records, make changes to multiple items at same time, and reassign product lines.

### SOLUTION

Install BSoft's Part Batch Processor

### RESULTS

Effortless inventory record "field" management; change pricing, descriptions, product line assignment, all with four simple steps!